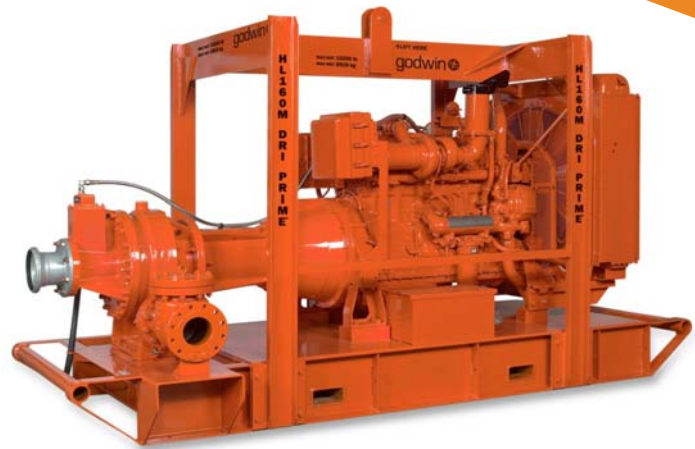


# HL160M Dri-Prime® Pump

The Godwin Dri-Prime HL160M pump offers flow rates to 2140 USGPM and has the capability of discharge pressures to 268 psi.

The HL160M is able to automatically prime to 28' of suction lift from dry. Automatic or manual starting/stopping available through integral mounted control panel or optional wireless-remote access.

High discharge pressure, dry-running, and portability make the HL160M the perfect choice for mining, industrial and emergency fire backup applications.



## Features and Benefits

- Simple maintenance normally limited to checking fluid levels and filters.
- Dri-Prime (continuously operated Venturi air ejector priming device) requiring no periodic adjustment or control. Optional automatic on-off control available on the priming system.
- Dry-running high pressure liquid bath mechanical seal with high abrasion resistant solid silicon carbide faces.
- Close-coupled centrifugal pump with Dri-Prime system coupled to a diesel engine or electric motor.
- All cast iron construction (stainless steel construction option available) with cast steel impeller.
- Also available in a critically silenced unit which reduces noise levels to less than 70dBA at 30'.
- Standard engine Caterpillar C15 (T3 Flex). Also available with Caterpillar C15 (IT4).

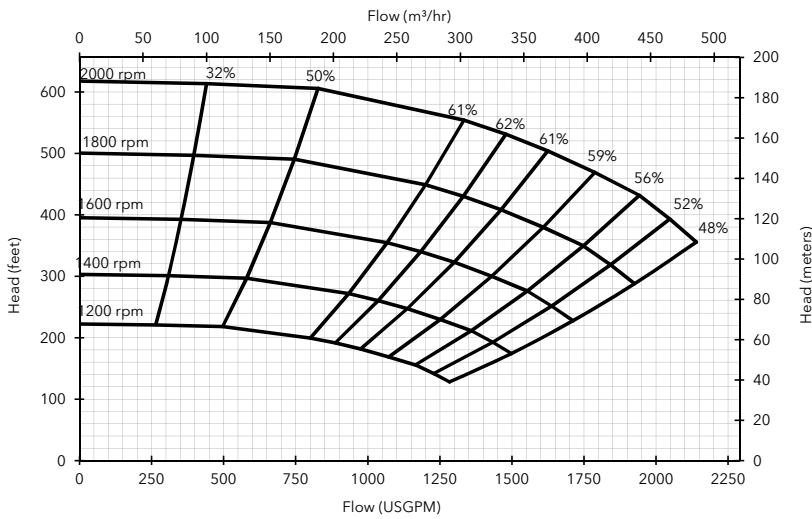
## Specifications

Suction connection	8" 150# ANSI B16.5
Delivery connection	6" 300# ANSI B16.5
Max capacity	2140 USGPM †
Max solids handling	1.4"
Max Impeller diameter	20.0"
Max operating temp	176°F*
Max working pressure	268 psi
Max suction pressure	87 psi
Max casing pressure	402 psi
Max operating speed	2000 rpm

\* Please contact our office for applications in excess of 176°F.

† Larger diameter pipes may be required for maximum flows.

## Performance Curve



### Engine option 1

Caterpillar C15 (T3 Flex), 475 HP @ 2000 rpm

Impeller diameter 20.0"

Pump speed 2000 rpm

#### Suction Lift Table

Total Suction Head (feet)	Total Delivery Head (feet)				
	361	459	525	591	591
	Output (USGPM)				
10	2140	1788	1519	1057	815
15	2091	1752	1471	1013	748
20	1827	1783	1409	872	713
25	1431	1387	1277	881	-

Fuel capacity: 240 US Gal

Max Fuel consumption @ 2000 rpm: 24.4 US Gal/hr

Max Fuel consumption @ 1800 rpm: 23.7 US Gal/hr

Weight (Dry): 12,240 lbs

Weight (Wet): 14,040 lbs

Dimensions: (L) 162" x (W) 67" x (H) 95"

Performance data provided in tables is based on water tests at sea level and 20°C ambient. All information is approximate and for general guidance only. Please contact the factory or office for further details.

## Materials

Pump casing & suction cover	Cast iron BS EN 1561 - 1997
Wearplates	High Chromium Cast Iron HC403:1977 Grade FR6252
Pump Shaft	Carbon steel BS 970 - 1991 817M40T
Impeller	Cast Steel BS3100 A5 Hardness to 200 HB Brinell
Non-return valve body	Cast Iron
Mechanical seal	Silicon carbide face; Viton elastomers; Stainless steel body

### Engine option 2

Caterpillar C15 (IT4), 475 HP @ 2000 rpm

Impeller diameter 20.0"

Pump speed 2000 rpm

#### Suction Lift Table

Total Suction Head (feet)	Total Delivery Head (feet)				
	361	459	525	591	591
	Output (USGPM)				
10	2140	1788	1519	1057	815
15	2091	1752	1471	1013	748
20	1827	1783	1409	872	713
25	1431	1387	1277	881	-

Fuel capacity: 240 US Gal

Max Fuel consumption @ 2000 rpm: 24.4 US Gal/hr

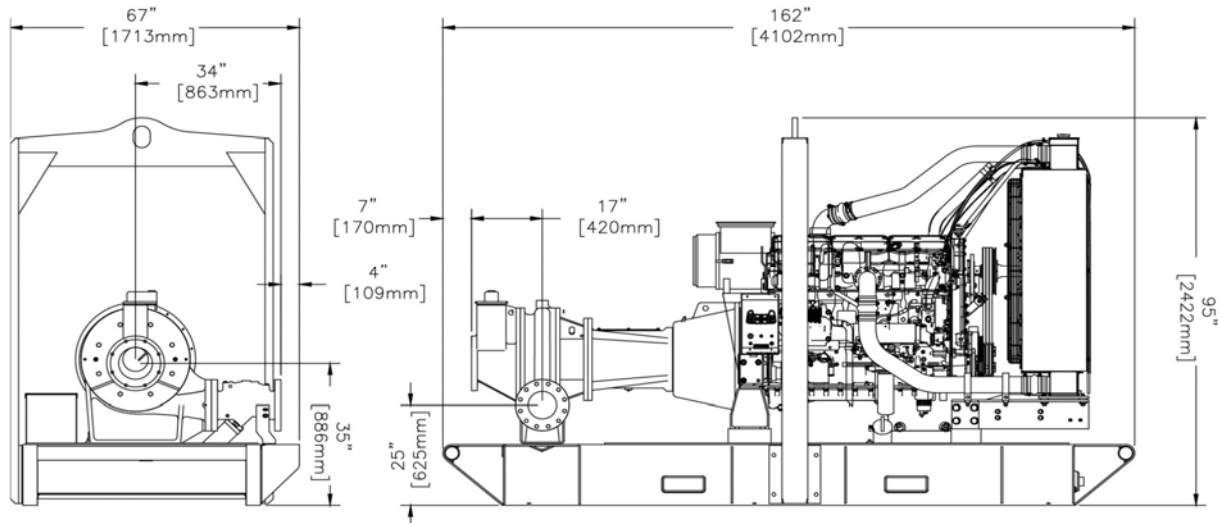
Max Fuel consumption @ 1800 rpm: 23.7 US Gal/hr

Weight (Dry): 13,240 lbs

Weight (Wet): 15,040 lbs

Dimensions: (L) 162" x (W) 67" x (H) 109"

Performance data provided in tables is based on water tests at sea level and 20°C ambient. All information is approximate and for general guidance only. Please contact the factory or office for further details.



84 Floodgate Road  
Bridgeport, NJ 08014 USA  
(856) 467-3636 . Fax (856) 467-4841  
Email: sales@godwinpumps.com

Reference number : 95-1117-3000  
Date of issue : February 26, 2014  
Issue : 3

[www.godwinpumps.com](http://www.godwinpumps.com)